



Men's Facility  
188 Old Railroad Grade Rd  
Roan Mountain, TN 37687

Women's Facility  
695 Princeton Rd.  
Johnson City, TN 37601

Stuck in an **endless** cycle?

Struggling with **addiction**?

Looking for a **way out**?

*Northeast Residential Recovery Court might be the place for you if you are wanting to make a positive change in your life.*

## PROGRAM OVERVIEW

This is a one-year residential program located in Roan Mountain and operated by Families Free, a licensed, substance abuse/co-occurring treatment center through the TN Dept. of Mental Health and Substance Abuse Services. This is a court ordered program for non-violent, felony level individuals who struggle with substance abuse, unhealthy family patterns, and other maladaptive patterns that led to incarceration.



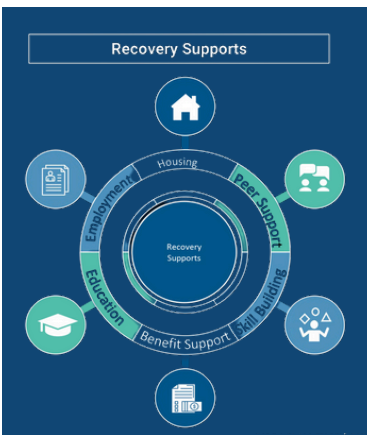
The program includes treatment, access to mental health services, primary care, life skills, parenting education, family services, and case management.



The program also offers classes through Tennessee College of Applied Technology on site, church services, 12 step meetings, and access to employment with phase advancement.



All of the services, structure, and programming is geared to help individuals live into their full potential while being productive members of society and restoring family relationships.





Men's Facility  
188 Old Railroad Grade Rd  
Roan Mountain, TN 37687

Women's Facility  
695 Princeton Rd.  
Johnson City, TN 37601

Stuck in an **endless** cycle?

Struggling with **addiction**?

Looking for a **way out**?

*Northeast Residential Recovery Court might be the place for you if you are wanting to make a positive change in your life.*

## PROGRAM OVERVIEW

This is a one-year residential program located in Roan Mountain and operated by Families Free, a licensed, substance abuse/co-occurring treatment center through the TN Dept. of Mental Health and Substance Abuse Services. This is a court ordered program for non-violent, felony level individuals who struggle with substance abuse, unhealthy family patterns, and other maladaptive patterns that led to incarceration.

The program includes treatment, access to mental health services, primary care, life skills, parenting education, family services, and case management.



The program also offers classes through Tennessee College of Applied Technology on site, church services, 12 step meetings, and access to employment with phase advancement.



*All of the services, structure, and programming is geared to help individuals live into their full potential while being productive members of society and restoring family relationships.*

# PROGRAM PHASES

## Phase Length

Phase I	Phase II	Phase III	Phase IV	Phase V
Min – 60 days / Up to 120 days	Min – 60 days / Up to 120 days	Min – 60 days / Up to 90 days	Min – 60 days / Up to 90 days	Min – 60 days / Up to 90 days

### Program Exclusions

- Violent Offenders
- Sex Offenders
- Sentence shorter than program length

### Referral Sources

1<sup>st</sup>, 2<sup>nd</sup>, and 3<sup>rd</sup> Judicial District Recovery Courts Judicial leadership and their teams

### Assessments

Individuals will be assessed for programming as part of the screening, intake, and admissions process. Assessments could include, but are not limited to the Addiction Severity Index, Traumatic Brain Injury, Criminogenic Risk, General Anxiety Disorder, and others.

### Daily Activities

- Group Treatment
- Medication Administration
- Individual Learning
- Self-help Support
- Faith-based learning / Spiritual Component
- Personal Wellness / Exercise
- Chores / Cleaning
- Employment / Vocation Assignment

\*Employment / Vocation Assignment not eligible until Phase 3

### Re-Entry

The program will seek to provide opportunities for participants to have a successful reintegration into the community. Participants will be assessed using a re-entry tool (e.g., GAINS Re-Entry Checklist and a Recovery Capital Assessment) to address challenges, barriers, and needs of the individual.

# PHASE STRUCTURE

